

## **PRINSEP LITHIUM PROJECT DRILLING UPDATE**

### **Highlights**

- **1,900m metres of drilling successfully completed. This represents just over half of the planned initial program.**
- **Samples have begun being dispatched to the assay laboratory with several batches being expedited for immediate processing.**
- **Early observations from drilling have prompted additional holes in this program and the planning of follow up deeper diamond drilling and RC infill drilling.**



Figure 1: RC Drill Rig working at the Prinsep Lithium Project.

**Accelerate Resources Limited (“AX8”, “Accelerate” or the “Company”)** is pleased to provide an update on drilling progress at its 100% Prinsep Lithium project located 15km south of Karratha in the West Pilbara of Western Australia.

The company has successfully completed over half its 3500 metre RC program, with over 1,000m of strike tested along the northern lithium zone.

Drilling is progressing as planned with program activities expected to be completed as planned (see ASX:AX8 20<sup>th</sup> April 2024). Samples have started being delivered to the assay laboratory with a number of batches being expedited for processing.

Based on initial findings, the Company is already planning follow up drilling to include deeper diamond drilling and infill RC drilling and will announce further details over the coming weeks.

**Mr Luke Meter, Chief Executive Officer of Accelerate commented:** “I am impressed with the efficient and safe manner of the Prinsep drill program as well as the quality of sample being produced. The company is encouraged by the work completed to date and is busy designing deeper diamond drill holes and infill RC holes.”

## Prinsep Lithium Project

The Prinsep Lithium Project is situated 15km south of the regional centre of Karratha and 35km west of SH Mining’s (formerly Azure Minerals) Andover Lithium Project. Prinsep forms part of the Company’s larger Karratha Lithium Projects portfolio which encompasses approximately 85km<sup>2</sup> of prospective tenure within the emerging Karratha – Roebourne hard-rock lithium belt (Figure 2).

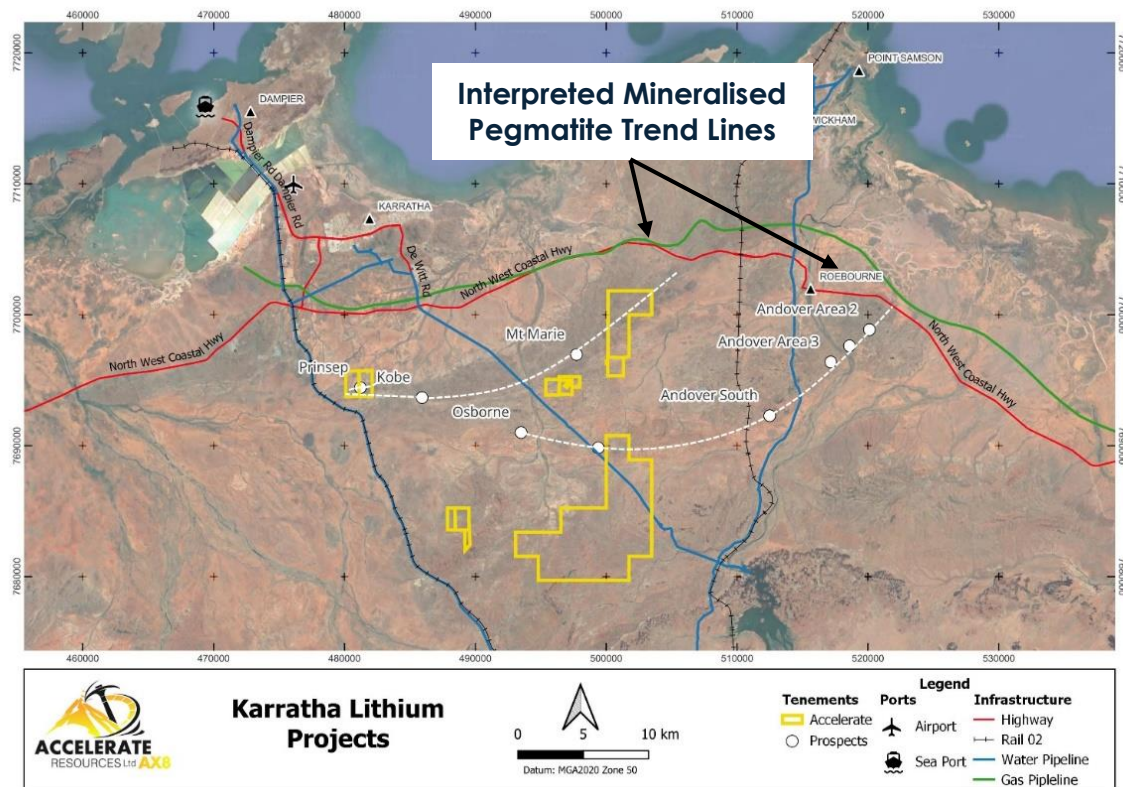


Figure 2: Karratha Lithium Projects in relation to local infrastructure and mineralised pegmatite trends

To date, mineralisation has been defined across two sub-parallel pegmatite zones, each over 1,800m in length with widths up to 60m and rock chip sample assays results ranging up to 2.06% Li<sub>2</sub>O (see Figure 3 and ASX: AX8 28 November 2023).

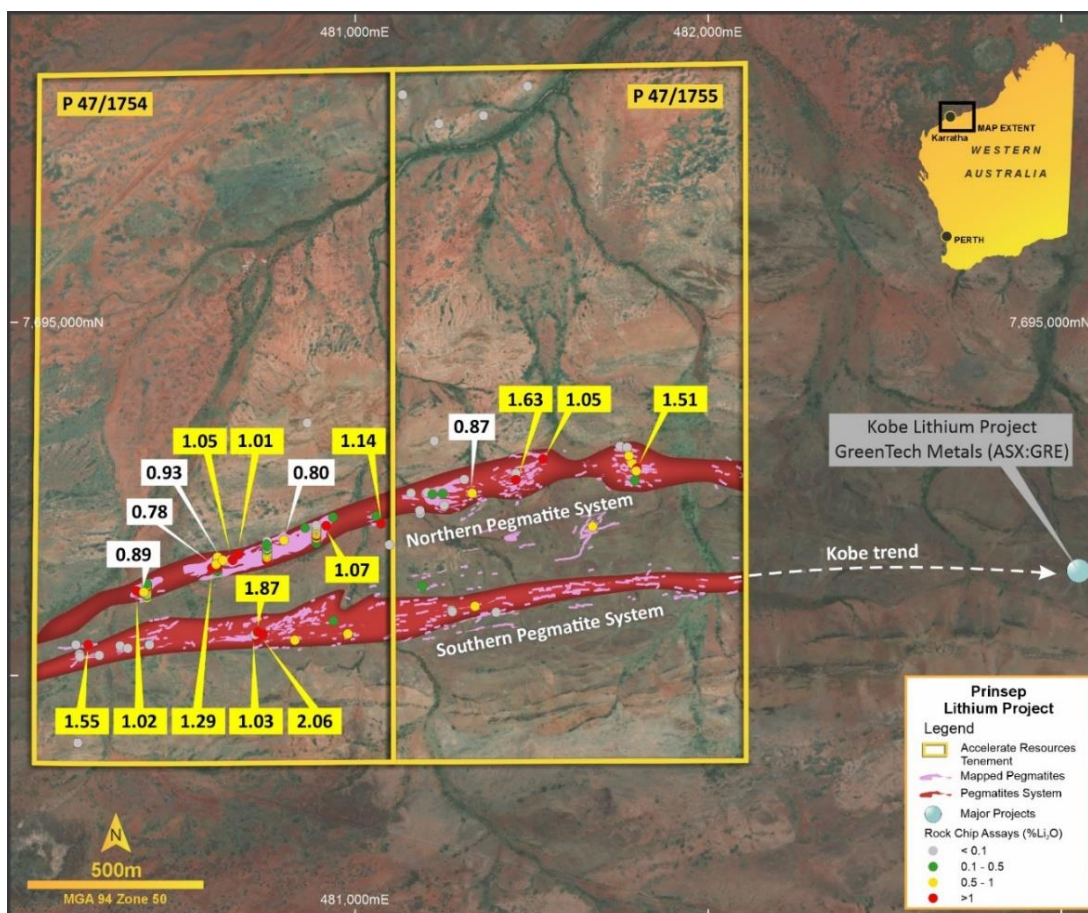


Figure 3: Pegmatite mapping and location of significant rock chip assay results at the Prinsep Lithium Project.

*This announcement has been produced by the Company's published continuous disclosure policy and approved by the Board.*

**For further information, please contact:**

**Luke Meter**  
**Chief Executive Officer**

E: [Lukem@AX8.com.au](mailto:Lukem@AX8.com.au) | P: +61 8 6248 9663 | W: [www.AX8.com.au](http://www.AX8.com.au)

## Related ASX Announcements

This release contains information extracted from the following market announcements which are available on the Company website [www.ax8.com.au](http://www.ax8.com.au)

- 20/05/2024 *Drilling Commences at Prinsep Lithium Project*
- 15/02/2024 *Strong Mineralisation Continuity confirmed over Prinsep Lithium Project*
- 28/11/2023 *AX8 Prinsep Lithium Project Mineralisation over 1.8km*
- 01/11/2023 *Fieldwork Commences at the Karratha Lithium Project*
- 09/10/2023 *AX8 Karratha Lithium Projects Presentation October 2023*

### **Forward Looking Statements**

Statements contained in this release, particularly those regarding possible or assumed future performance, costs, dividends, production levels or rates, prices, resources, reserves or potential growth of Accelerate Resources Limited, are, or may be, forward looking statements. Such statements relate to future events and expectations and, as such, involve known and unknown risks and uncertainties. Actual results and developments may differ materially from those expressed or implied by these forward-looking statements depending on various factors.

### **Competent Person Statement**

Information in this release related to Exploration Results is based on information compiled by Mr Kevin Joyce. He is a qualified geologist and a Member of the Australian Institute of Geoscientists (AIG). Mr Joyce has sufficient experience, which is relevant to the style of mineralisation and type of deposit under consideration and to the activity being undertaken to qualify as a Competent Person as defined in the 2012 Edition of the 'Australasian Code for Reporting of Exploration Results, Mineral Resources, and Ore Reserves'. Mr Joyce is a consultant to Accelerate Resources, he consents to the inclusion in this release of the matters based on his information in the form and context in which it appears.

## APPENDIX 1:

### Sample locations of reported rock Li<sub>2</sub>O% Assays

Sample ID	Datum	Easting	Northing	Li <sub>2</sub> O %
AA351	GDA2020 Zone 50	480739.6	7694117.6	2.06
AA319	GDA2020 Zone 50	480724.8	7694124.1	1.87
AA386	GDA2020 Zone 50	480750	7694325	1.68
AA312	GDA2020 Zone 50	480243.8	7694088.8	1.55
AA537	GDA2020 Zone 50	481798	7694587	1.51
AA380	GDA2020 Zone 50	480610	7694310	1.31
AA323	GDA2020 Zone 50	480595.1	7694305.8	1.29
AA387	GDA2020 Zone 50	480750	7694330	1.21
AA381	GDA2020 Zone 50	480610	7694315	1.16
AA402	GDA2020 Zone 50	480890	7694395	1.14
AX03071	GDA2020 Zone 50	480919.02	7694425.49	1.07
AA321	GDA2020 Zone 50	480653.6	7694328.5	1.05
AX03084	GDA2020 Zone 50	481533.02	7694614.49	1.05
AA379	GDA2020 Zone 50	480610	7694305	1.04
AA415	GDA2020 Zone 50	480410	7694250	1.03
AX03085	GDA2020 Zone 50	480382.02	7694240.49	1.02
AA384	GDA2020 Zone 50	480610	7694330	1.01
AA389	GDA2020 Zone 50	480750	7694340	0.91
AA414	GDA2020 Zone 50	480410	7694245	0.90
AA407	GDA2020 Zone 50	480890	7694420	0.89
AX03086	GDA2020 Zone 50	480402.02	7694237.49	0.89
AX03081	GDA2020 Zone 50	481332.02	7694517.49	0.87
AA388	GDA2020 Zone 50	480750	7694335	0.84
AA413	GDA2020 Zone 50	480410	7694240	0.84
AA538	GDA2020 Zone 50	481796	7694579	0.81
AA539	GDA2020 Zone 50	481775	7694622	0.79
AA395	GDA2020 Zone 50	480750	7694370	0.76
AA403	GDA2020 Zone 50	480890	7694400	0.74
AA412	GDA2020 Zone 50	480410	7694235	0.74
AA546	GDA2020 Zone 50	481672	7694422	0.72
AA409	GDA2020 Zone 50	480410	7694220	0.68
AA390	GDA2020 Zone 50	480750	7694345	0.68
AA391	GDA2020 Zone 50	480750	7694350	0.66
AA548	GDA2020 Zone 50	480979	7694118	0.64
AA550	GDA2020 Zone 50	481339	7694196	0.64
AA404	GDA2020 Zone 50	480890	7694405	0.63
AA547	GDA2020 Zone 50	480829	7694100	0.61
AA536	GDA2020 Zone 50	481784	7694600	0.60
AA401	GDA2020 Zone 50	480890	7694390	0.59
AA416	GDA2020 Zone 50	480410	7694255	0.56

Sample ID	Datum	Easting	Northing	Li2O %
AA405	GDA2020 Zone 50	480890	7694410	0.52
AA385	GDA2020 Zone 50	480610	7694335	0.51
AA398	GDA2020 Zone 50	480890	7694375	0.48
AA331	GDA2020 Zone 50	481190.8	7694253	0.45
AA417	GDA2020 Zone 50	480410	7694260	0.44
AX03072	GDA2020 Zone 50	480938.02	7694449.49	0.43
AA383	GDA2020 Zone 50	480610	7694325	0.40
AX03079	GDA2020 Zone 50	481249.02	7694516.49	0.36
AA396	GDA2020 Zone 50	480750	7694375	0.33
AA400	GDA2020 Zone 50	480890	7694385	0.32
AX03073	GDA2020 Zone 50	481061.02	7694452.49	0.29
AA399	GDA2020 Zone 50	480890	7694380	0.26
AA535	GDA2020 Zone 50	481792	7694552	0.25
AA394	GDA2020 Zone 50	480750	7694365	0.25
AA382	GDA2020 Zone 50	480610	7694320	0.23
AA377	GDA2020 Zone 50	480610	7694295	0.22
AA410	GDA2020 Zone 50	480410	7694225	0.21
AA545	GDA2020 Zone 50	481219	7694513	0.20
AA378	GDA2020 Zone 50	480610	7694300	0.12
AA392	GDA2020 Zone 50	480750	7694355	0.11